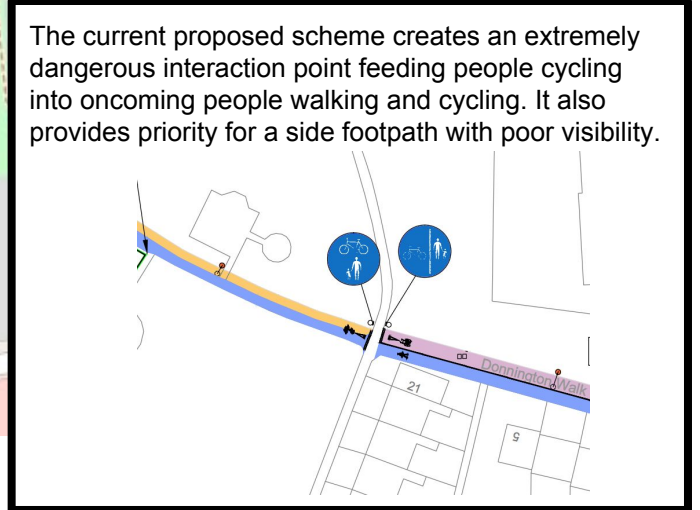
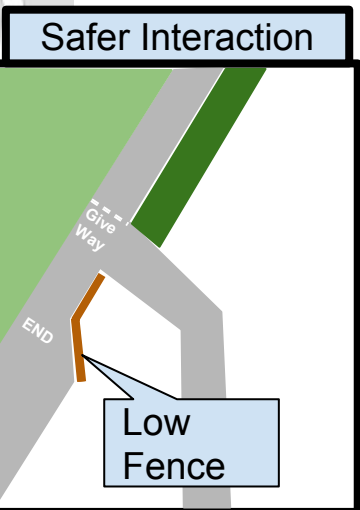
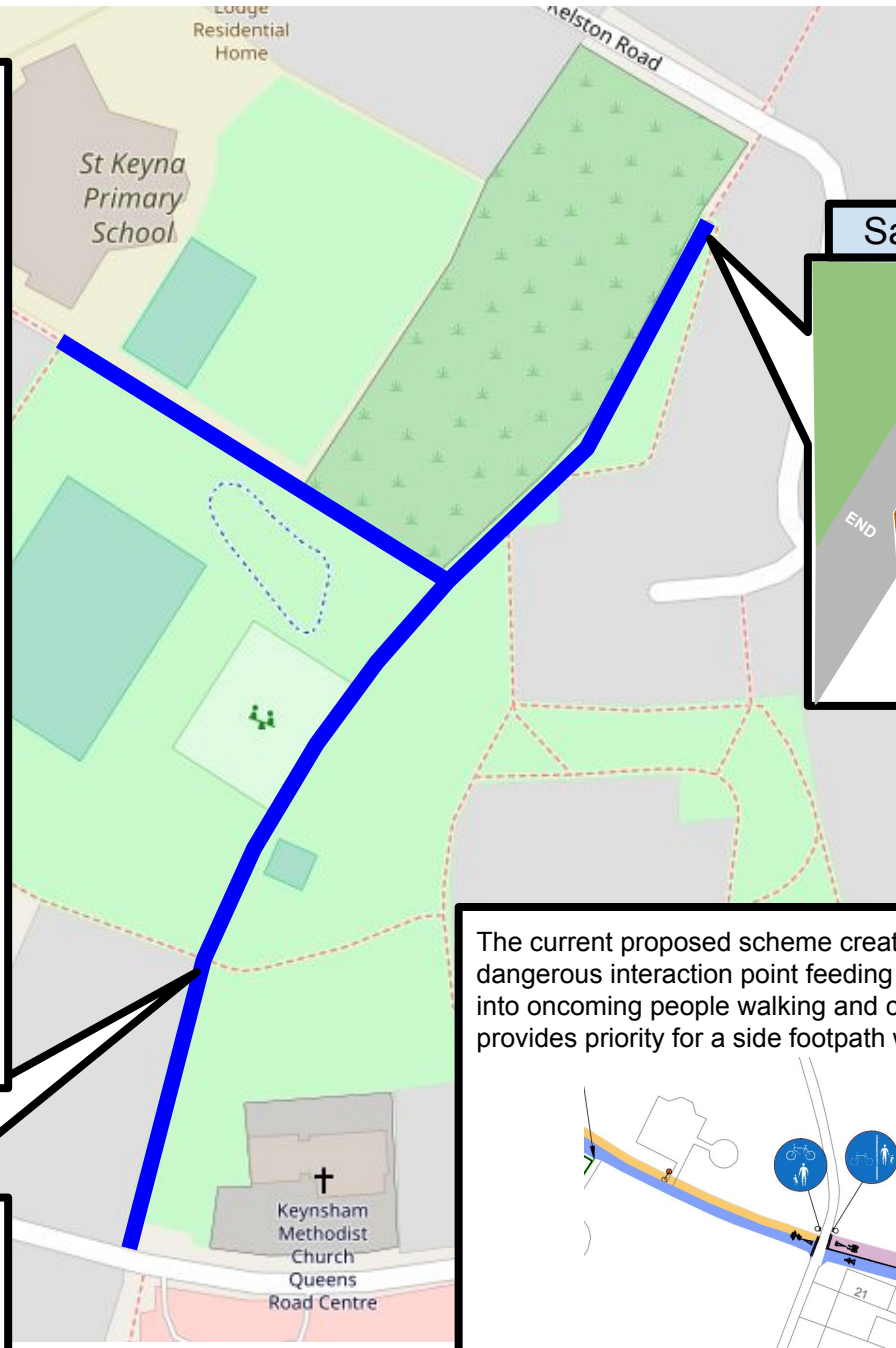
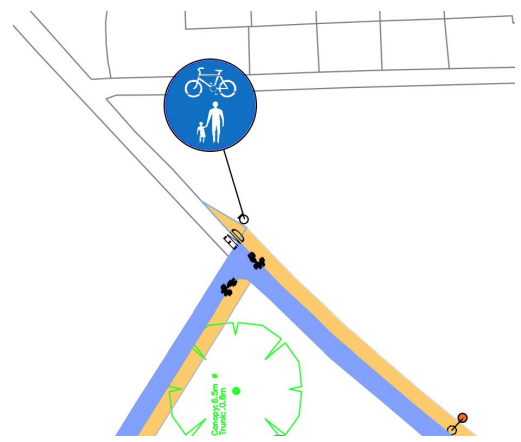
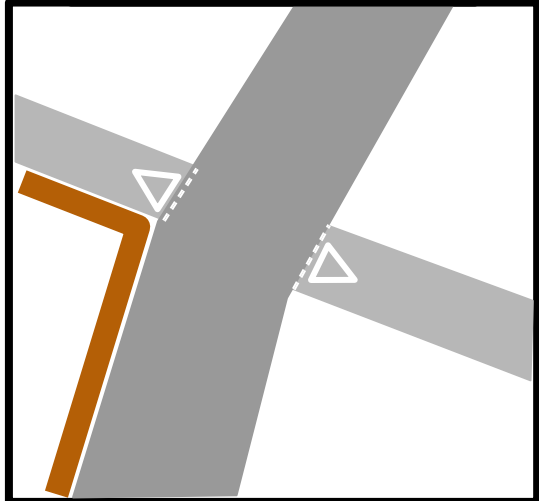


The scheme ends suddenly at the school junction failing to provide a good route from the north and connecting to the existing good wide path north of Kelston Road



The current proposed scheme creates an extremely dangerous interaction point feeding people cycling into oncoming people walking and cycling. It also provides priority for a side footpath with poor visibility.

Safer Junction



3M wide shared path throughout

Proposed improvement to create safer routes to school than proposed TC8834/GA/02 scheme.